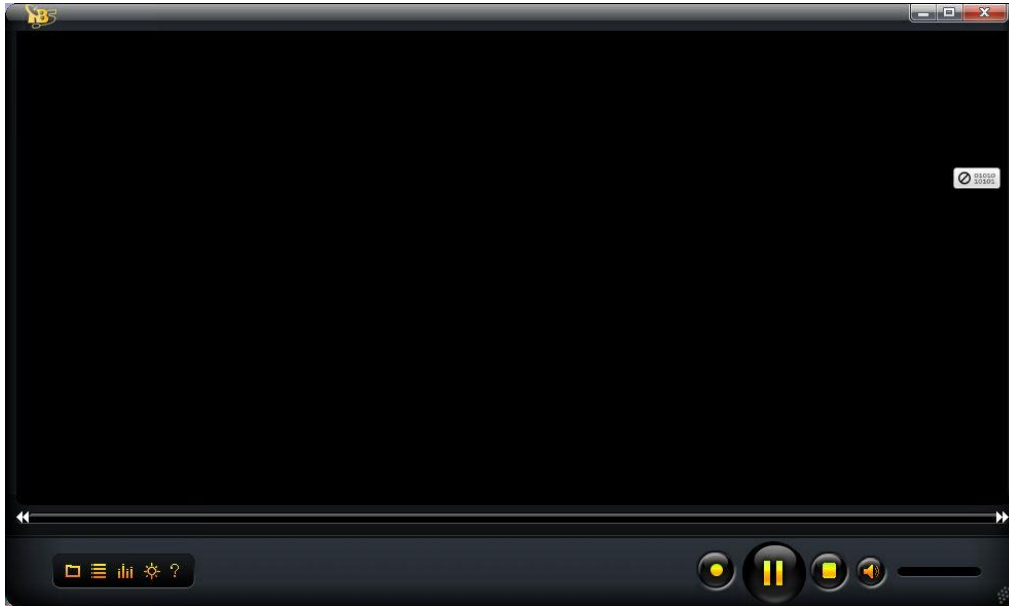


## TBS-Viewer user manual

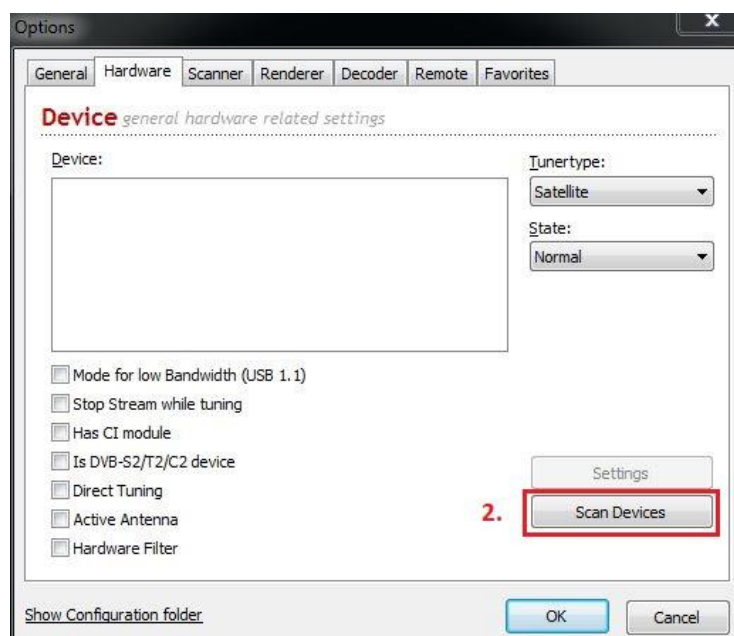
### Step 1:

After installing the driver software, you must configure the hardware of the TBS viewer. After you have successfully installed the TBS viewer on your computer, open it, move the mouse pointer over the TBS viewer's surface and press the right mouse button to select the "Options".



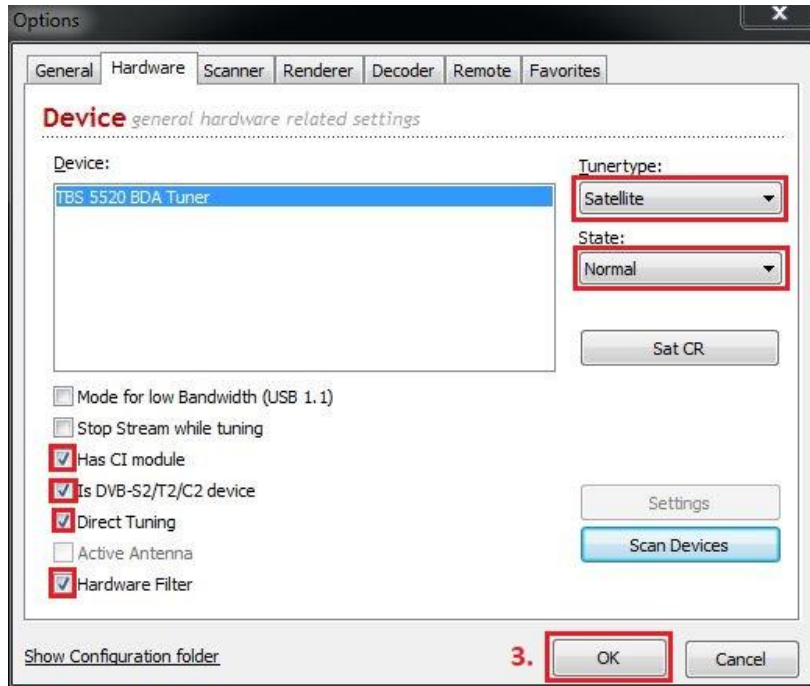
### Step 2:

In the "Options" under the category "Hardware" please click on "Scan Devices" to configure the TBS TV card / box.



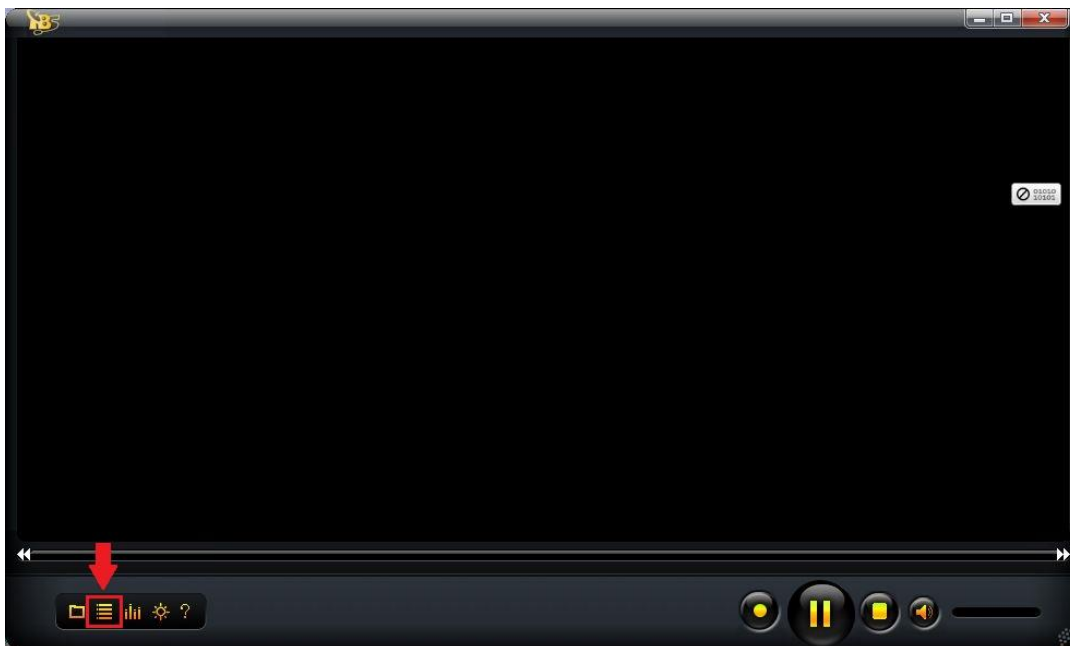
**Step 3:**

After the TBS TV card has been found, please check the points marked below and confirm with "OK" if correct. Please note that these settings vary depending on the device.



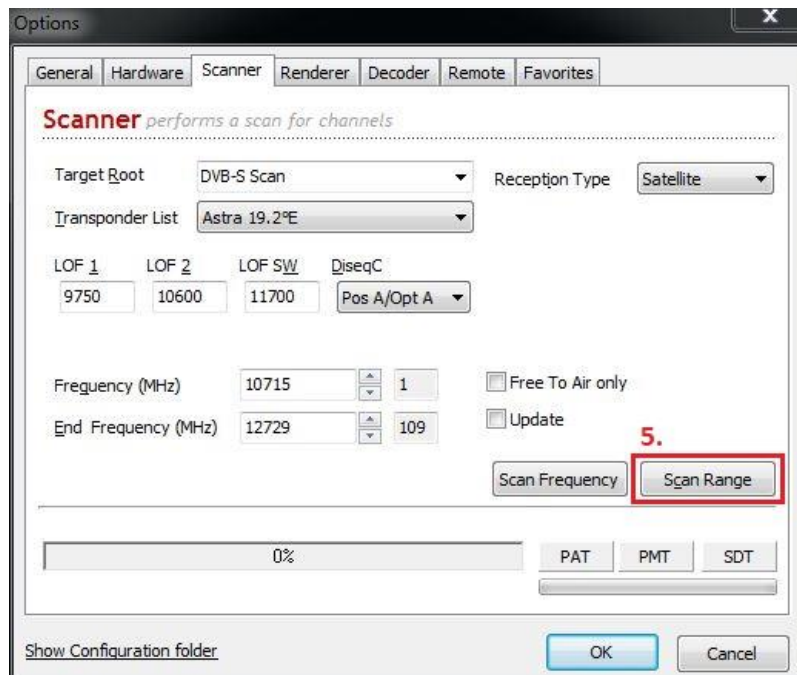
**Step 4:**

Now scan for channels. This can be found under "Options" and "Scanner" or on the field marked in the picture.

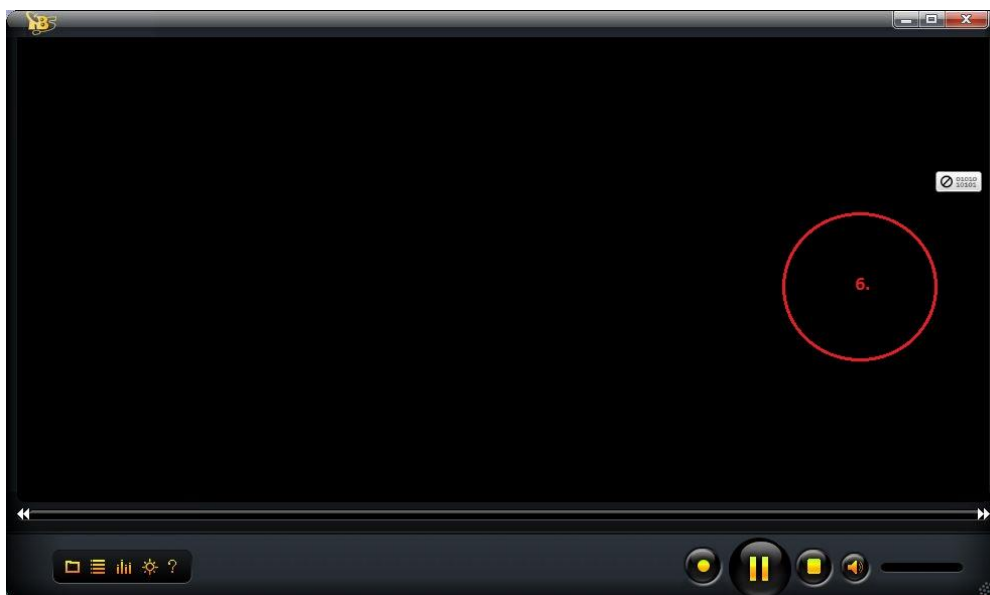


**Step 5:**

Please make sure that the correct reception type (according to your card) is selected. Once you have named the Target Root, you can start the channel search by clicking on "Scan Range". This process can take several minutes.

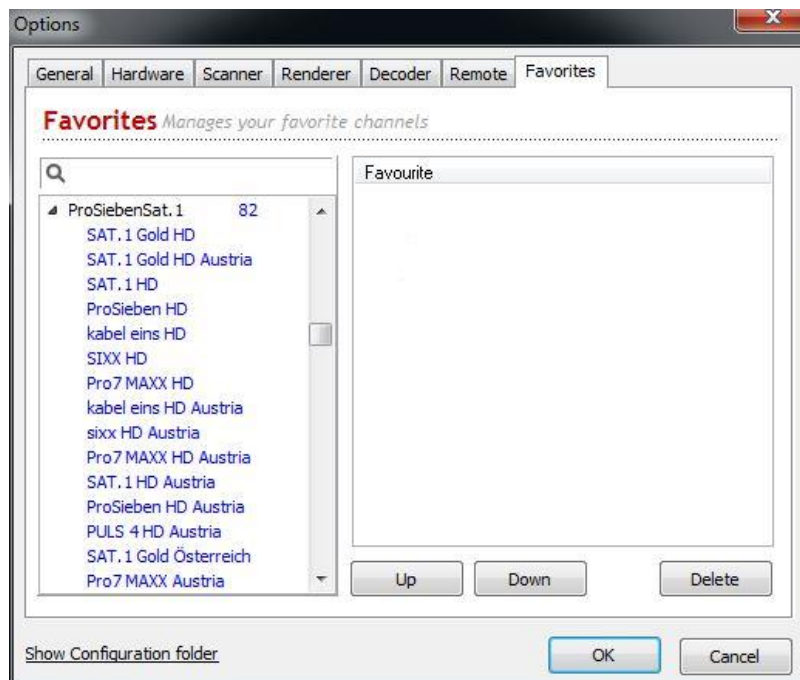
**Step 6:**

When the channel search is finished, you can close the options window by confirming the "OK" button. Now move the mouse pointer into the upper right area (red circle) of the TBS viewer. Here your channel list will appear. You can select the desired channels by double-clicking with the mouse. It is also possible to switch between the channel list and the favorites list here.



**Step 7:**

Create your favorites list. Open the items "Options" and "Favorites". On the left side are now your station lists.

**Step 8:**

Search for your favorite stations from the list and pull them individually with the mouse in the right field "Favorites". Here they are stored, for faster access. You can edit your favorites list by selecting and using the "Up" and "Down" keys. To delete stations from the favorites list, mark them and click on "Delete".

